



Kidsⁱⁿ **NEED** WAIKATO

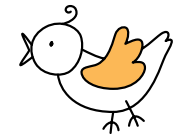
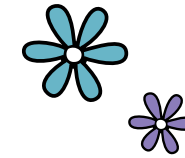
Annual report

1 April 2024 – 31 March 2025



Contents

Chair's report	Page 4
Our purpose, our vision, our values	Page 8
A message from our founder	Page 10
Our team	Page 13
Our volunteers	Page 14
Our impact	Page 16
Who we support	Page 19
Caregiver feedback	Page 24
Highlights	Page 28
Colour Cambridge	Page 31
Christmas	Page 37
Looking ahead	Page 39
Our supporters and funders	Page 41
Donor highlight	Page 45
Financial summary	Page 59





CHAIR'S REPORT

As we reflect on the past year, *Kids in Need Waikato* has remained steadfast in our mission to support children being raised by someone other than their biological parents, and to walk alongside the caregivers who step up with love and commitment. With care packs as our foundation and wraparound programmes entering their third year, we've continued to deliver both practical support and a deep sense of connection to the whānau we serve.



The year marked continued growth in both reach and impact. In response to rising demand – and powered by the incredible generosity of our community – we introduced new initiatives, strengthened our infrastructure, and set bold strategic goals to ensure the long-term sustainability of our work.

Our Purpose, Vision and Values remain the cornerstone of everything we do:

Our purpose

We act, in trust, for children within the Waikato region who are in the care of someone other than their parents, including support for the caregiver.

Our vision

Every child feels valued and recognises the potential to create a better future.

Our values

- C**are with compassion
- A**ct with integrity
- K**eep an open mind
- E**mpower others



Programme Impact

For the period ending 31st March 2025 we distributed 17% more care packs than the previous year and supported 36% more children through our Christmas campaign. Care packs – comprising new underwear and pyjamas, clothing, toys, books, and essential items – help restore dignity and comfort to children often arriving in care with just the clothes they stand in. Thanks to generous community donations, these remain a vital source of support for children in care and their caregivers.

In the 2024/25 year we:

- Assembled and delivered 1,886 care packs, averaging 157 packs per month
- Provided 1444 children and 470 caregivers with Christmas gifts
- Provided 552 caregivers, raising 1,311 children, with active ongoing support
- Hosted 19 KIN Coffee Groups attended by 129 caregivers in Te Awamutu, Te Kuiti and Putāruru
- Held 3 KIN Days In onsite in Cambridge during school holidays, attended by 79 participants
- Facilitated 1 Big Day Out at Finlay Park Adventure Camp for 91 participants 2nd November 2024
- Organised the inaugural Colour Cambridge event, bringing together 800 community members for a vibrant day of fun, connection, and fundraising.

Community Support and Collaboration

We have observed a continuing trend of increased need in our community, which is consistent with national data on child poverty. The year saw a 17% rise in requests for regular care packs compared to the previous period – evidence of how essential our work has become to many whānau across the Waikato and beyond.

We continued to receive referrals for one-off packs – often for children in newly established care arrangements – through a wide range of agencies including schools, social workers, NZ Police, and medical centres. Hamilton remains the area of highest need across our region, with significant increases in Rotorua, South Waikato and Taumarunui.

In addition to our core service, we remain focused on the wellbeing of the families we support. Our established programmes – KIN Coffee Groups, KIN Days In, KIN Days Out and Big Day Out – have provided opportunities for connection, recharge, and access to support from others walking similar paths. These initiatives continue to be well-received, and we see them as vital to reducing isolation and improving outcomes for both caregivers and children.

Throughout the 2024/25 period, our commitment to collaboration remained strong, and we continued to build meaningful relationships with organisations that support similar communities. New and ongoing partnerships with groups such as Pillars Ka Pou Whakahou, Tuu Oho Mai, Male Support Services Waikato, Kaute Pasifika Trust and Single Parent Services Waikato, have helped us extend our reach and impact. Grandparents Raising Grandchildren continues to be the primary source of referrals for support. We remain mindful of the power of working together and the importance of complementing – rather than duplicating – existing services to better support the whānau we serve.

Volunteer and Operational Strength

The heart of our work continues to be powered by the dedication of our people. Over the 2024/25 year, 30 volunteers contributed over 8,000 hours of their time, with additional support from community groups during our busiest seasons. This incredible volunteer effort is complemented by our committed team of five part-time staff, who work alongside our founder, Linda Roil, to ensure the continuity, quality, and growth of the support we provide to children and their caregivers.

Financial Summary

During the 2024/25 fiscal year, Kids in Need Waikato achieved a strong financial position, reflecting both the generosity of our supporters and careful management of resources. This positive result strengthens our ability to plan for future growth, invest in new initiatives such as KIN Retreats, and continue progressing our capital campaign to secure a permanent home for the charity.

The following is a summary of our financial performance for the year:

Total Revenue: \$618,985

Total Expenses: \$510,842

Net Surplus: \$108,143

\$55k of the reported surplus relates to a portion of grants received that are for the next financial year.



Future Plans

Looking ahead, we are focused on the following key priorities:

Securing a Permanent Home: Following a review of our long-term sustainability, the Board resolved to pursue ownership of our current operational base at 118 Fencourt Road, Cambridge, which is currently under private ownership. Securing this site under the Charity's name is a significant step forward – it will allow us to develop the property to better meet the needs of our community, and ensure our work is not at risk due to changes in tenancy.

This campaign is a key focus for the 2025/26 year. Early planning, consultation and fundraising have already begun, and we look forward to inviting our supporters into this important project.

Enhancing Volunteer Program: Regional Coordinators are being appointed in Putaruru, Tokoroa, and Thames/Coromandel, helping to strengthen our connection to these communities and extend support more locally. These are volunteer-led positions, and we're delighted to have found suitable applicants who are deeply committed to the cause.

Expanding Community Reach: We are excited to launch our KIN Retreats during the 2025/26 fiscal year – an initiative designed to provide short, restorative stays for caregivers and the children in their care. These 2-night retreats will offer families a much-needed break from daily pressures, creating space for rest, connection, and fun in a supportive environment. The programme builds on our commitment to holistic support, recognising that wellbeing for both children and caregivers is essential to thriving care arrangements. We look forward to seeing the positive impact this initiative will have as it becomes an integral part of our wraparound services.

Diversifying Funding Sources: We continue to actively seek new funding opportunities to ensure financial sustainability.

The growing need in our community continues to drive us, and with the strength of our team, the generosity of our supporters, and the resilience of the whānau we serve, we are well-positioned to expand our impact. From launching KIN Retreats to securing a permanent home through our capital campaign, we are entering a new chapter – one focused on long-term sustainability, deeper connection, and greater support for every child and caregiver who turns to us.

We are continually humbled by the generosity of our donors, funders, sponsors, community partners, and volunteers. Whether you've made a financial contribution, donated goods, shared our story, or offered your time – **thank you**. You are making a real difference.

To Linda Roil – our Founder, visionary, and full-time volunteer – you are the heartbeat of Kids in Need Waikato. The Board is deeply grateful for your tireless dedication.

To the entire team, both paid and volunteer – thank you for the work you do, the heart you bring, and the hope you create.

We enter the coming year with purpose and optimism, ready to continue walking alongside the children and families who need us most.



Amy Banks

Chair

The Kids in Need Waikato Charitable Trust



OUR PURPOSE

We act, in trust, for children within the Waikato region, who are in the care of someone other than their parents, including support for the caregiver.

OUR VISION

Every child feels valued, and recognises the potential to create a better future.

OUR VALUES

Care with compassion

Act with integrity

Kee an open mind

Empower others



“

“We often support families in their hardest, most vulnerable moments. The support from Kids in Need helps us meet not only their practical needs but also takes a huge weight off their shoulders. He mihi tenei kia koe mo to mahi, it makes a lasting difference every single day”

Social Worker

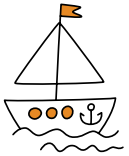




“

“When tamariki have what they need – warm clothing, undergarments, hygiene essentials – it eases the financial and emotional stress on the whānau. This relief allows whānau to redirect their energy and resources into other areas of their hauora”

Social Worker



“

“KIN is caring, open, understanding and most of all lifesaving when it's most needed”

Caregiver



“

“KIN helps so much with clothing and footwear – staff and helpers are so polite and don't make you feel shy or ashamed – they feel like family”

Grandparent



A MESSAGE FROM OUR FOUNDER

Back to the beginning

I remember it like it was yesterday. In 2014, Graeme and I decided to become foster carers. No sooner had we completed our training than we received a phone call asking us to take a 10-year-old boy. For privacy, I'll call him Dane.

By the time we met Dane, he had endured years of abuse, been passed from home to home, lived in a boy's facility, and spent six years in care. When we met him, he was staying in a motel room with a minder – because no one else would take him.

He arrived with nothing but a black rubbish bag. Inside it was his entire life. The bag reeked, his clothes were mouldy, and most didn't even fit him. The only thing he treasured in that bag was a photo of his Mum.

I posted a request on the Pay It Forward Cambridge Facebook page, urgently asking for clothing for Dane. The community responded with overwhelming generosity. They got to know me because we regularly received children with nothing, and they continued to donate clothing and other essentials to support us.

As we connected with more caregivers, we discovered a shared challenge: many children were arriving with only the clothes they were wearing or with their belongings stuffed into black rubbish bags. I saw an opportunity to make a difference by ensuring caregivers had the essentials they needed – like clothing – to provide comfort and stability for the children in their care.

After a year as foster carers, we decided to focus on newborns who had been uplifted at birth and we still had clothing donations of all sizes



pouring in from the community. So one night, I filled a brand-new backpack with size 4 boys' clothing, a book, a toy, and a toothbrush, then posted it on the Foster Carers' page. It was snapped up within minutes. So, I did another one – and that was gone just as fast. That moment sparked the creation of Kids in Need. That was 2017 and I've never looked back.

A Givealittle campaign and an ASB Good As Gold Santa Edition award of \$6,000 set us on the path of creating storage for the donated items, while requests kept coming in from caregivers asking me for clothing.

Every night, after the babies we were fostering were asleep, I'd assemble the packs. I'd take photos of what was inside and share them on a Facebook page, so donors could see exactly where their contributions were going. One man told me that his son saw something he had donated going into a pack, and he was thrilled to know it was helping.

In 2017, I assembled around 400 packs, and that number has grown every year – reaching 1,726 packs in 2024 (calendar year).

With your support, we've been making a difference for over a decade – seven of those years as a registered charitable trust. Your belief in our mission has made this possible, and we are truly grateful.


Together, we are changing lives. Thank you for being part of this journey!

Founder



Kids ⁱⁿ NEED WAIKATO



W. www.kidsinneed.co.nz 



OUR TEAM

The Kids in Need Waikato Charitable Trust is governed by a Board of Trustees. The Board meets quarterly to ensure the smooth running of the Trust by providing strategic leadership and direction.

Kids in Need Waikato employs 5 part-time staff members who play a vital role in supporting the day-to-day operations and ongoing development of the organisation. Staff include:

Administrator

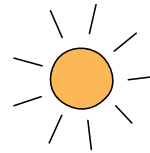
Funding Coordinator

Operations Coordinator

Programme and Relationship Coordinator

Shed Assistant

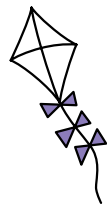
Together, this dedicated team works behind the scenes to ensure Kids in Need can continue to meet the growing demand for support across the region.



“

“KIN have been a fantastic support for our family. Not just keeping kids clothed but emotional support for myself. Friendly, approachable team that have helped us with the little extra things kids need on their journey to adulthood. You guys are amazing. I feel included in something wonderful that expands our lives and am never made to feel like a lesser person for asking for help”

Grandparent



OUR VOLUNTEERS

Volunteers play a central role in the work of Kids in Need Waikato, contributing across every part of our operation – from sorting donations and sewing care pack bags, to assembling and delivering care packs. More than 30 volunteers generously give their time each week to help meet the ongoing needs of the charity.

Over the past year, we've also seen an increase in corporate and community group involvement, welcoming 25 different volunteer groups, including 20 groups during our Christmas campaign. This growing engagement from local businesses and organisations has added valuable capacity and energy to our work. In total, volunteers contributed over 8,000 hours this year – an extraordinary commitment that reflects the community's dedication to supporting children and their caregivers.

Linda Roil continues to volunteer 100% of her time as Founder of Kids in Need Waikato. In November 2024, Linda was presented with a City of Hamilton Civic Award. These prestigious awards recognise people who have made an outstanding contribution to the community. Linda joined a handful of other recipients, highlighting her amazing dedication and vision to supporting children and caregivers in the Waikato

“

“It's a nice feeling putting together a pack that has items that match the child's interest knowing that they are going to get something special of their own”

Volunteer





“

“I love feeling that I have helped children in some small way to make their life a little better”

Volunteer

“

“I love being part of an enthusiastic and caring team, everyone wants to provide the best for the families and everyone takes great care in all aspects of creating care packages for children and families”

Volunteer



“

“My highlight of volunteering for Kids in Need is finding the exact item a child asks for or is interested in”

Volunteer

OUR IMPACT

1886 personalised care packs provided

192 one-off packs provided

8.4 tonnes of preloved clothing, bedding and shoes used in care packs

1444 children supported with **4050** Christmas presents

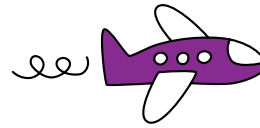
470 caregiver Christmas presents

1311 children and **552** caregivers receiving ongoing support from *Kids in Need*

91 people attended Big Day Out at Finlay Park in November 2024

19 coffee groups attended by 129 caregivers

3 KIN Days In attended by 79 participants (Respite Days)



“

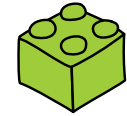
“You fill gaps where it seems impossible”

Grandparent

“

“Kids in Need have a heart of gold and make a huge difference to not just the kids but also those adults who have been entrusted with caring for their needs”

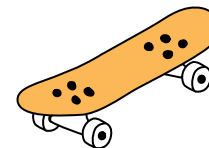
Grandparent



“

“I am totally amazed at the seasonal packs of clothing that my 2 have received for some years now. I totally love seeing the joy, excitement, and happiness on the faces of my 2 mokopuna”

Grandparent





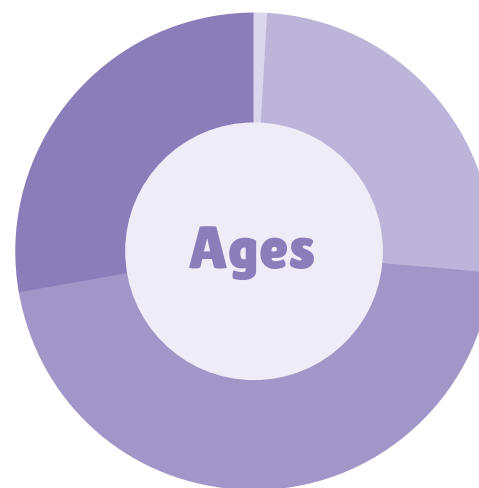
	X	X
O	O	
X		O



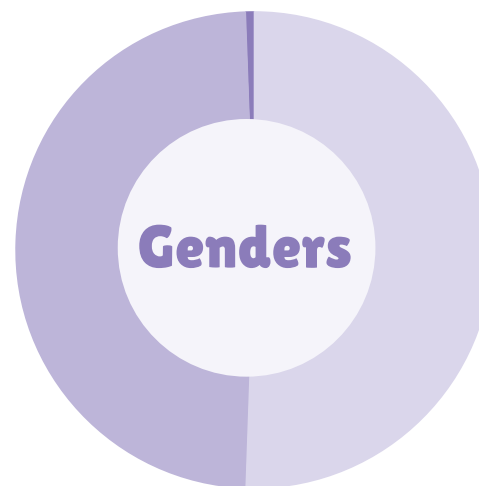


WHO WE SUPPORT

We support children and young people aged 0–17 years. This year, we also provided support to 157 children with additional needs, ensuring their care packs were tailored to suit them. Our team makes sure each child receives a personalised care pack with the essentials and special items they deserve.



- Under 1 year **13**
- 1 – 5 years **336**
- 6 – 12 years **600**
- 13+ years **362**



- Male **665**
- Female **641**
- Diverse **5**



Caregiver voice *Gail*

Gail has been raising her great-great niece and nephew, now seven and nine, since they were born. For the past three years, she's been part of the Kids in Need family, receiving regular support that helps ease the financial pressure – especially when it comes to clothing for her growing tamariki, “Kids in need are so wonderful helping to supply my children with clothes especially the things I need for my wee girl with eczema.”

Gail and the children have joined in on our KIN Days In and the Big Day Out at Finlay Park, where they've had a fantastic time with other children, “Finlay park is absolutely amazing as are KIN days in. My children love having this opportunity to attend and seeing them interact with leaders and other kids is fantastic. I also get to have time out with other adults knowing my children are being well looked after.”





Caregiver voice *Rose*

When Rose and her husband opened their hearts to a baby at just two weeks old, their world changed overnight. Retirement plans quietly took a back seat as they stepped into a new season.

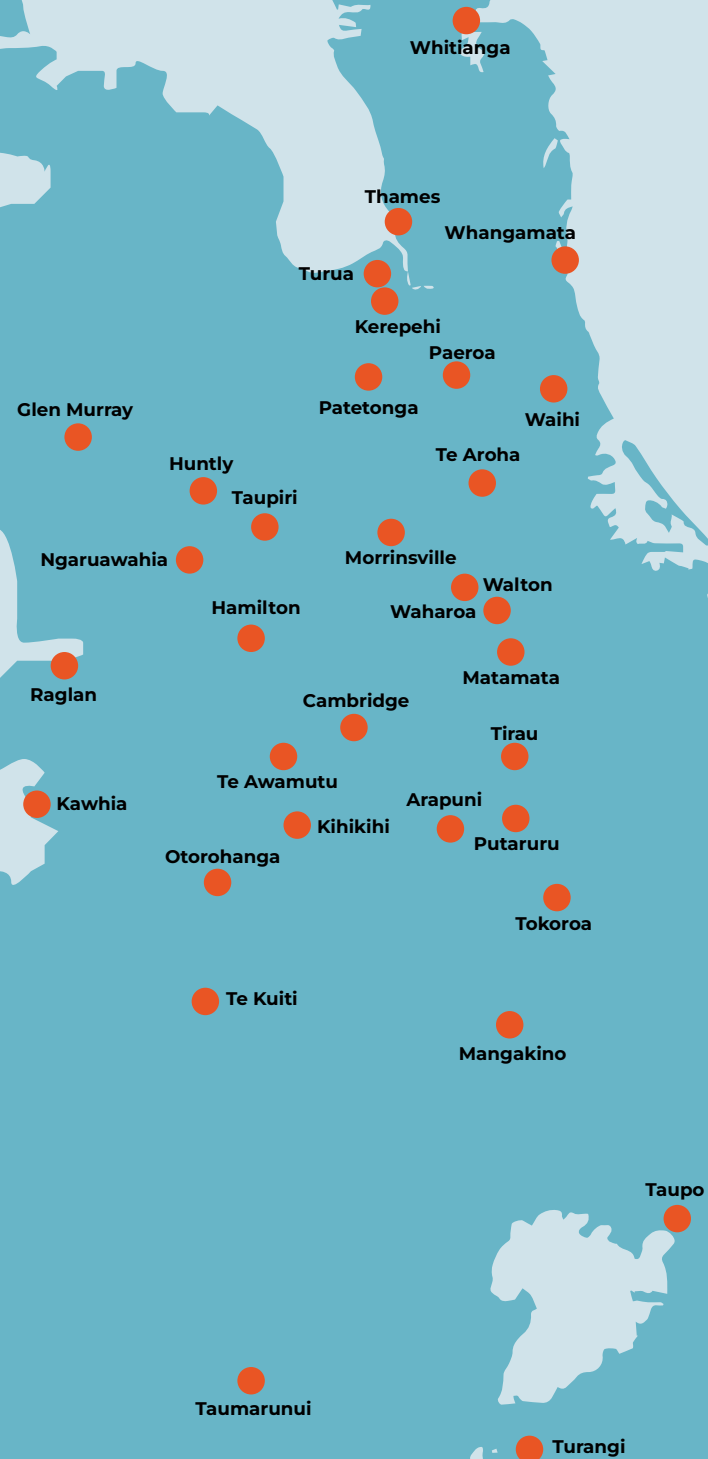
Rose connected with Kids in Need five years ago through a chance meeting with Linda at her local supermarket. That conversation became a lifeline. In those early days, when support was hard to come by, the care packs and clothing provided by Kids in Need made a real difference.

Over time, Rose became a familiar face at caregiver coffee mornings and events like the Big Day Out. These gatherings have been more than just social – they've offered community, advice, and a chance to share the journey with others who truly understand.

"It was a bit of a shock, because not long after coming back from Australia, I was thinking, lovely, retire now. What shall I do? Then my husband rings up and said, 'How would you like to have a baby, for a couple of weeks'... then it turned out to be six years"



**Kids in Need supports
children and their
caregivers in towns
throughout the
Waikato region.**





CAREGIVER FEEDBACK

113 responses

95%

gave 5/5 satisfaction rating with Kids in Need Waikato



72%

said the online pack request form was easy or very easy to fill in



93%

gave our delivery/pick up process 5/5 satisfaction rating



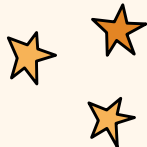
The most helpful pack items were

Clothing, shoes, underwear and toiletries



91%

gave our packs 5/5 satisfaction rating



98%

said they would recommend Kids in Need to other caregivers



“

“The gift my girl received far exceeded our expectations and she was ecstatic when she opened it. We live in a rural community and it was hand delivered when they were in the area. Over and above”

Caregiver

“

“Wow you don't know the difference this is going to make, and how much stress you have alleviated from my shoulders in order to keep the children warm this winter”

Caregiver



“

“The packs we received where a God send, everything we needed when our grandchildren came into our care with nothing, and the kids were so happy to have new things that belonged to them, and every pack feels so personalised”

Grandparent



“

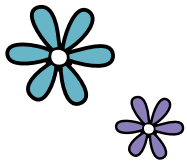
“I was totally blown away at the thought and consideration that went into the items provided”

Grandparent

“

“These packs are amazing. I am crying while the kids are opening them. It is like Christmas. Thank you and the organisation so much the kids love everything”

Caregiver







“

“As a grandparent I only want the children to be safe, happy and healthy. When they came into my care they only came with the clothes they were wearing. I couldn't get financial support in the beginning for the girls. When the clothing packs arrived the girls' smiles were as big as their faces. I hadn't seen them smile that big for a long time. Thank you for going above and beyond to help clothe my three moko girls”

Grandparent



HIGHLIGHTS

Care packs

Our main priority continues to be delivering personalised care packs that are lovingly put together by our dedicated team of volunteers and staff. Each pack takes approximately one hour to complete and includes carefully selected clothing, shoes, toiletries, seasonal items, books, activities, toys, and a soft toy. We know these care packs are making a real difference – not just to the child receiving them, but to the entire family. They provide practical support, and a powerful reminder that there are people who care.



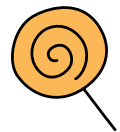
“One of the most significant moments has been witnessing tamariki and rangatahi receive items that are truly their own – for many, it was the first time they had ever had new clothing or personal hygiene products”

Social Worker

“

“The continued presence of your support is nothing short of a lifeline... Thanks to your kindness, our tamariki have the chance to thrive, feel cared for, and be warmly clothed...For many of the children I work with, who come from backgrounds of hardship, trauma, and displacement, receiving one of your packs feels like receiving a gift from someone who genuinely cares. It brings light to their lives during some of their darkest moments”

Social Worker



“

“We saw you bringing in the packs and didn't realise we were getting a pack as well...Thank you so much! This is the coolest thing me and my sister have gotten before”

Brother and sister in care



“

“The care packs are so beautifully put together and have brought so much joy to the tamariki and whaanau we have given them to. In particular, there have been some very sad situations in which children have been left by parents unexpectedly, and been cared for by other whaanau, and they've had few belongings with them, so the packs have been a great comfort for them – not only the clothing, but the special touches of a soft toy and a personal note”

Whānau support worker

“

“Just such a lot of care and understanding for our little sensory boy. KIN knew that some things on clothing like zips might irritate him and they asked what works best. So thankful for the help”

Caregiver







Colour Cambridge 2024, our inaugural fundraising colour run held on Sunday 20th October at Hautapu Sports Club, was a vibrant celebration of community and a major boost for children in care across the Waikato.

All 800 tickets sold out, with participants of all ages running, walking, skipping, or hopping through a lively 2km course featuring eight colourful paint stations, a water spray courtesy of Cambridge fire station, a bubble finish, and a dedicated obstacle course for under-6s.

Beyond the course, families enjoyed food trucks, spot prizes, and entertainment, with “best dressed” awards inspiring an array of colourful and creative costumes.

Local sponsors, volunteer groups, Olympians, and community organisations came together to bring the event to life, creating a warm and spirited atmosphere that captured the heart of Kids in Need.

Thanks to this incredible collective effort, Colour Cambridge raised an outstanding \$25,600. These funds went directly to support the growing needs of children in care and their caregivers across the region. This event not only exceeded expectations but also laid a strong foundation for an even bigger and brighter Colour Cambridge in 2025.



Sponsors and supporters

Colour Cambridge would not have been possible without the wonderful support from a wide range of businesses and individuals.

Thank you to our Event Supporters:



Thank you to our Colour and Event Sponsors:



Thank you to our Community Sponsors:



KIN Kid Sponsors

Thank you to the following groups and individuals who sponsored children and their caregivers to attend the event.

APL

D Te Wharau

LJ Hooker Cambridge (Gerda Venter)

Shakespeare 56 Ltd (J. Mason & K. Burgess)

The Forest ECE and Kura



Prizes and services

Thank you to the following businesses and groups who provided amazing raffle prizes or services on the day.

Alpino

Burgerfuel

Cambridge Fine Wine Company

Cambridge Fire Brigade Cambridge Hire Centre

Cambridge Hire Bins

Fore Seasons Indoor Golf

Goodbye

Grassroots Trust

Grin

Hobbiton

Homebrew Coffee

Langsford & Ogle

Leven

Matt Hicks DJ

Onyx Restaurant

Raglan Food Co.

Riverside Adventures

Rumor

Straw Warehouse

The Girl on the Swing

Total Event Hire

Tron Audio

Tyre Traders

Unichem Cambridge

Volare

Waipa District Council

Weave Home

Wholly Cow







Christmas

Our annual Christmas campaign continues to receive strong support from the wider community, allowing us to reach thousands of children across the region each festive season. The generosity shown through donations of brand new gifts brings incredible joy to children, and their caregivers, who might otherwise go without at this special time of year.

1444 children supported with **4,050** presents

470 caregiver gifts

36 drop off points around the Waikato (including 21 public drop off points)

20 businesses helped with wrapping

20 rotary clubs involved in distributing gifts.

\$85,000 worth of gifts



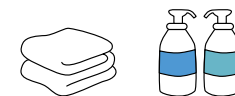


“

As a single Nana raising mokopuna, without the help and support received by KIN during Christmas and winter, I would have struggled to provide gifts and clothes for my mokopuna”

Grandparent





LOOKING AHEAD

Looking ahead, we are focused on the following key priorities:

Securing a Home for Kids in Need: As part of our focus on long-term sustainability, the Board has made the decision to pursue the purchase of our current headquarters at 118 Fencourt Road, Cambridge. While the property is currently under private ownership, securing it under the Charity's name represents an important step forward. It will allow us to develop the site to better meet the growing needs of our community, and provide future stability.

This campaign will be a major focus for the 2025/26 year. Initial planning, consultation, and fundraising efforts are already underway, and we look forward to inviting our supporters to be part of this significant milestone.





Increasing Regional Support: Volunteer Regional Coordinators are being appointed in Putaruru, Tokoroa, and Thames/Coromandel. These roles will help strengthen our connection to these communities and enable us to provide more localised support. We're delighted to have found passionate, dedicated individuals who are committed to our mission and excited to take on these new positions.

Expanding Community Reach: We are excited to launch KIN Retreats during the 2025/26 fiscal year – a new initiative designed to offer short, restorative breaks for caregivers and the children in their care. These two-night retreats will create space for rest, connection, and fun in a supportive environment, recognising the vital importance of wellbeing for both caregivers and children. We believe this programme will become a meaningful part of our wraparound support, and we look forward to seeing the positive impact it brings.





OUR SUPPORTERS AND FUNDERS

Our supporters

We gratefully acknowledge the following businesses for their continued support and professional services. Your dedication plays a vital role in helping Kids in Need make a meaningful impact in our community.



Our funders

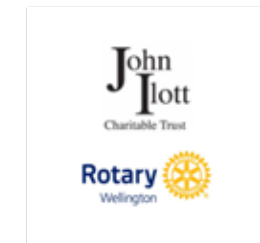
In a challenging funding environment, Kids in Need is especially grateful to the following funders for the generous grants received this year. Your support is vital in enabling us to continue providing care packs and assistance to families throughout the Waikato.

Margaret and Huia Clarke Trust

David Ellison Trust

Jumble Around Inc

Roy & Enid Nicol Trust





Individual donors

We would like to sincerely thank our dedicated regular financial supporters. Your sustained generosity and encouragement are invaluable to the ongoing work of Kids in Need within the community. Thank you for being on the journey with us.

Community donors

We are incredibly grateful to our community for the overwhelming support we've received through donations of both brand new and preloved items. In the 2024–2025 financial year alone, approximately 8.4 tonnes of preloved clothing, bedding, and shoes were lovingly sorted and included in care packs for children across the Waikato.

Every donated item is carefully checked by our volunteer team to ensure it meets our high standards. Suitable items are added to our clothing stock, while those not appropriate for the children we support are thoughtfully passed on to local op shops or community groups who can make the most of them. We couldn't do this without the kindness and generosity of our community.

Donors

Thank you to the following groups who donated funds to support Kids in Need Waikato:

Altrusa Te Awamutu Garden Ramble
Bello Vida
Busy Bees Pop Up Shop
Cambridge Rotary Garden Festival
Carricks
Catholic Women's League Rotorua
CSC Buying Group
Dairy Goat Cooperative
Homebrew Customers
Ebbett Toyota Morrinsville
Frances Skeet Charitable Trust
Flower Crate
Gallagher Group
St Andrews Hamilton
Hill Labs
Hillcrest Garden Club
Knox Presbyterian Church Morrinsville
Leamington Rugby Sports Club
Lockerbie Estate Ltd
Maungakawa Environment Group
McCaw Lewis Foundation
Minis Waikato Inc
Morrinsville Kiwanis
Mosaic Choir

NMS Homes Ltd
NSAA Juice Plus
NZ Concrete Homes
Odell Home
One NZ – One Good Kiwi
Oxford Pies – Oxford Pies x The Breeze pies
Perry Group
Property Brokers
Raglan Food Co Ltd
Road and Sport Ltd
Rotary Club of Rototuna
Rotorua West Rotary Club
Safewise Ltd
Sarah Macdonald Yoga
St Andrew's Women's Group
St Stephen's Church Christmas Festival Craft Group
Stragglers Car Show 2024
Taupo Rotary
The Church of Jesus Christ of Latter-day Saints – Giving Machine
The Lions Club of Tamahere
The Nar Foundation
The Wash Club
Thrive Projects (Exult)
Turn and Gymnastics
Waikato Lyceum Charitable Trust
Waotu-Puketurua Garden Club
WBOP Harness – Cambridge Raceway Xmas Eve
Young at Heart Senior Gym Pirongia

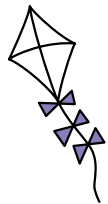


Donor Highlight

Oxford Pies x The Breeze

Kids in Need are incredibly grateful for the ongoing support of Oxford Pies and The Breeze Waikato, who teamed up to create limited edition pies in 2021, 2023, and 2024! Each year, in collaboration with The Breeze Waikato, Oxford Pies crafts unique and delicious flavours, with a portion of the proceeds generously donated to Kids in Need Waikato. In 2024 they raised over \$10,000 – an amazing contribution that helps us continue supporting children and their caregivers across the region.

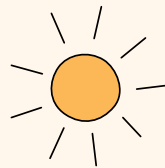




Donor Highlight

Shelving in the Project Shed

The Project Shed, built in October 2023, received a fantastic upgrade with the installation of fixed shelving generously supplied and installed by Southward, and fully funded by Busy Bees Op Shop Cambridge. This improvement has made our storage far more efficient and was especially helpful in keeping everything well organised during our busy Christmas campaign.

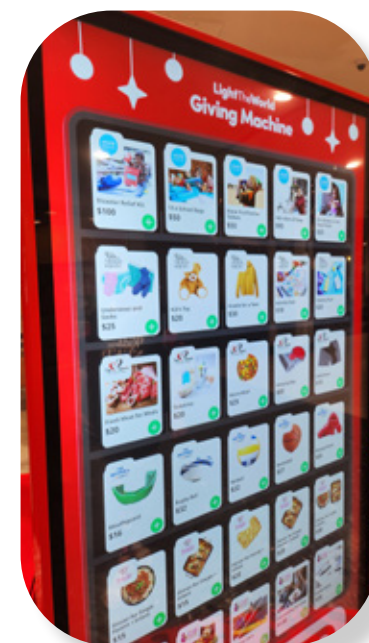




Donor Highlight

Giving Machine 2024

We were honoured to be one of the local charities chosen for the 2024 Light the World Giving Machine in Hamilton. As the first mobile digital Giving Machine in the world, this incredible initiative brought the community together at Chartwell Shopping Centre to celebrate the true spirit of Christmas – by giving. Visitors could choose to support local and global causes with the simple swipe of a card, purchasing practical, life-changing items for those in need. We're so grateful to have been included and deeply appreciate every person who chose to support Kids in Need Waikato through this meaningful experience.





Community Partners

We are proud to partner with a range of charities and organisations across the Waikato region including 43 referral agencies. These collaborations not only strengthen our shared impact but also build a sense of community and connection, enabling us all to better support those who need it most.





“

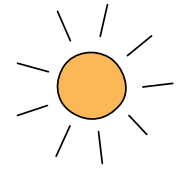
The responsiveness and consistent support are unmatched, no other agency we work with provides the same level of care for our tamariki and whaanau...One moment that stands out was when we had to urgently place a newborn into the care of a grandparent with no notice. Kids in Need responded immediately, providing everything needed within hours. That kind of support is rare and deeply appreciated.

Social Worker





Schools/ ECE



Kids in Need Waikato is fortunate to be supported by many local schools and early childhood centres across the Waikato. These communities generously contribute through donations, volunteering, and fundraising efforts. We extend special thanks to the following schools for their outstanding commitment of time and resources in support of our work:

Cambridge High School

Rototuna High Schools

Hamilton Boys High School

Matamata College

St Peter's School Cambridge

St Mary's School Putaruru

Te Awamutu College

Te Kowhai School



Drop off locations

A number of generous Waikato businesses help make our work possible by acting as public drop-off points for new and pre-loved clothing, shoes, and other essential items. We're incredibly grateful for their ongoing support and community spirit.

Classic Builders

Daisy Digital Marketing

Edge Protection

Essential Cleaners Morrinsville

TAG Business Services

Tolbecs Ear Clinic

UK Flooring Te Awamutu



Vehicle supporters

Covering around 40,000 kilometres each year in our two vehicles, the Kids in Need team relies heavily on the generosity of others to keep us on the road. Our van was purchased in 2022 thanks to a successful crowdfunding campaign and the generous support of the Greenlea Foundation Trust, Anstiss Garland Trust, and Ebbett Volkswagen. It has once again played a vital role – delivering hundreds of care packs throughout the year and being packed to the brim with thousands of Christmas gifts during the festive season. The Ute is used every day by our Founder, Linda to connect with caregivers, deliver care packs, pick up donations, and attend coffee groups and talks.

We're deeply thankful to our vehicle sponsors, whose support has covered the ongoing running costs of both vehicles over the past year.



Gifts and services in kind

Each year, we're humbled by the generosity of businesses and organisations from across New Zealand, who choose to support Kids in Need. This year, we've been especially thankful for the generous contributions of goods from the following groups.

Band of Boys (clothing)

Cambridge Real Estate (winter pyjamas)

Common Equal (clothing)

Dignity (feminine hygiene products)

Good Bitches Baking (baking)

Goodbye (skin products)

Grin (dental hygiene products)

Kiwi Christmas Books (books)

Kat Quin ('Kuwi the Kiwi' books and bamboo cups)

Kruizey Kids (clothing)

Mediaworks (advertising)

Northern Districts Cricket (clothing, backpacks and cricket items)

Zuru (nappies, haircare, toys)







SOFT
Grin
BAMBOO TOOTHBRUSH

Recyclable tube!
KIDS
Grin
NATURAL STRAWBERRY
TOOTHPASTE GEL
WITH FLUORIDE



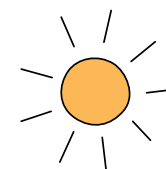
Financial Summary

Our financial accounts record financial position and the recording of financial transactions which is an essential requirement for any Charity. This is balanced against the huge amount of non financial donations, goods and services in kind, volunteer services and the support given to the children and caregivers that we assist.

Over the year, we have received significant donations of clothing, toys and personal hygiene items that we have been able to distribute to the families we support. Throughout our report we have detailed how significant this is and if measured in financial terms the value of all of these would be very similar in value to the total of our annual grants and donations.

We have adapted to the growing needs by ensuring that we have the right resources in the right areas. We continue to be successful in matching the level of grants we receive with a very active fundraising program.

For the full annual return please visit the Charities Services website.



Statement of Financial Position

The Kids In Need Waikato Charitable Trust As at 31 March 2025

	NOTES	31 MAR 2025	31 MAR 2024
Assets			
Current Assets			
Bank accounts and cash		52,727	62,372
Total Current Assets		52,727	62,372
Non-Current Assets			
Property, Plant and Equipment		98,640	109,379
Investments		230,000	-
Total Non-Current Assets		328,640	109,379
Total Assets		381,367	171,751
Liabilities			
Current Liabilities			
Creditors and accrued expenses		4,259	2,785
Other current liabilities		2,621	2,621
Total Current Liabilities		6,879	5,406
Total Liabilities		6,879	5,406
Total Assets less Total Liabilities (Net Assets)		374,488	166,345
Accumulated Funds			
Accumulated surpluses or (deficits)		274,488	166,345
Reserves		100,000	-
Total Accumulated Funds		374,488	166,345

Statement of Financial Performance

The Kids In Need Waikato Charitable Trust For the year ended 31 March 2025

	NOTES	2025	2024
Revenue			
Donations, koha, bequests and other general fundraising activities		316,570	233,665
General grants		301,779	231,980
Interest, dividends and other investment revenue		-	547
Other revenue		636	1,309
Total Revenue		618,985	467,502
Expenses			
Expenses related to fundraising		18,269	1,073
Employee remuneration and other related expenses		191,678	125,050
Volunteer related expenses		12,422	15,537
Other expenses related to service delivery		213,543	240,310
Grants and donations made		738	891
Other expenses		74,193	72,296
Total Expenses		510,842	455,157
Surplus/(Deficit) for the Year		108,143	12,345



